

# doremi

Technology Leadership  
for Digital Cinema

# DCP-2000

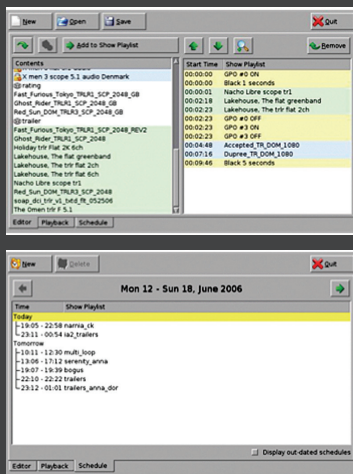
## Cinema Server

PREFERRED PRODUCT

DIGITAL CINEMA  
THEATERS  
WORLDWIDE

### Key Features:

- + Multi-File Playback
- + 2D & 3D Playback
- + Enhanced Security
- + Captioning Device Control
- + Support for Accessibility products (CaptiView & Fidelio)



The DCP-2000 cinema server provides superior reliability, image quality and an unmatched feature set. Each DCP-2000 reflects Doremi Labs' pioneering image server design and manufacturing experience, as well as the benefits of supporting the world's largest cinema server installation.

The DCP-2000 supports JPEG2000 and MPEG2 files. In addition it features Panavision3D®, REAL D®, XpanD®, and dual-projector 3D playback.

Each DCP-2000 server includes the CineLister software utility that provides effortless scheduling and playlist administration. Playlists can include both JPEG2000 and MPEG2 movie files, and pre-show content files.

The DCP-2000 was the first commercially available server capable of playing JPEG2000 digital movies conforming to DCI specifications. Today, it is by far the most installed cinema server worldwide.

### CineLister Software

CineLister allows the operator to build and play composition playlists as well as full session playlists. Playlists can include both JPEG2000 and MPEG2 movie files and pre-show content files.

The graphic user interface simplifies the management of image files and creation of new image clips. CineLister's extensive playlist creation capability can be used for on-line playback and play list scheduling.



# DCP-2000

---

## PLAYBACK

---

- ▶ JPEG2000 2K or 4K movie and pre-show file playback at 2K resolution – 12-bit 4:4:4 (XYZ, RGB) on dual link HD-SDI
- ▶ MPEG2 MXF interop movie, pre-show and alternative content file playback
- ▶ 3D – JPEG2000 movies and 48p playback via Dual 10-bit 4:2:2 (YPbPr/YCxCz)

## SECURITY

---

- ▶ TI's CineLink II Strong Link Encryption
- ▶ Thomson's NexGuard Forensic Watermarking
- ▶ FIPS 140-2 Level 3 Security Certified

## INTERFACE

---

- ▶ Gigabit Ethernet for file transfer
- ▶ Gigabit Ethernet for control & subtitling
- ▶ RS-422 serial control port
- ▶ USB2.0
- ▶ External control of captioning devices WGBH & PCS (Option)

## STORAGE

---

- ▶ Up to 4TB of RAID5 storage

## AUDIO

---

- ▶ AES/EBU audio digital 16 channels
  - Single DB-25 connector
- ▶ Balanced or unbalanced analog audio 8 channels (two options available)
  - Single DB-25 connector internal board
  - External digital audio (DB-25) to analog audio converter in a 1RU rack mount chassis

## GPIO

---

- ▶ 8 optically isolated inputs
- ▶ 8 open collector outputs

## VIDEO OUTPUT

---

- ▶ Dual link HD-SDI with physical link encryption

## OUTPUT RESOLUTION

---

- ▶ Dual link 2048 x 1080 24p 4:4:4 12 bit
- ▶ Two single links 2048 x 1080 24p 4:2:2 10 bit

## POWER

---

- ▶ Dual-Redundant Power Supply
- ▶ 100–240VAC 50–60Hz (2 x 300W)

## DIMENSIONS

---

- ▶ 3U Rack Unit
- ▶ 19" x 22" x 5.25" inch (48 x 56 x 13cm)

The English version of this document is the only legally binding version. Translated versions are not legally binding and are for convenience only

---



Technology Leadership  
for Digital Cinema

Doremi Labs, Inc.  
1020 Chestnut St. Burbank, CA  
91506 U.S.A.

Tel : +1 (818) 562-1101  
Fax : +1 (818) 562-1109  
[www.DoremiLabs.com](http://www.DoremiLabs.com)